

## New Break Identifies High-Grade Gold, up to 70.60 g/t Au, via Grab Sampling at Moray

Toronto, Ontario, September 29, 2022 – New Break Resources Ltd. (“New Break” or the “Company”) (CSE: **NBRK**) is pleased to report the results of grab and channel sampling programs conducted from June to August 2022, at its 100% owned Moray property (“Moray”) located approximately 49 km south of Timmins, Ontario and 32 km northwest of the Young-Davidson Gold Mine operated by Alamos Gold Inc. Gold mineralization at Moray occurs in second order structures interpreted as splays off the Cadillac Larder-Lake Fault Zone, part of the famous Abitibi greenstone belt.

New Break engaged Orix Geoscience Inc. (“Orix”) to oversee the grab and channel sampling programs and complete detailed structural mapping of the Voyager and Fiset areas, which included taking 74 grab samples from various areas of the Moray property, including in and around the historical Trench 12, stripped by SGX Resources Ltd. (“SGX”) in 2012 at the Voyager showing (“Trench 12”). The highest-grade grab sample of 70.60 grams per tonne gold (“g/t Au”) was located at the south end of the main Trench 12. Five samples from New Break’s program yielded assays higher than the highest 21.8 g/t Au assay from the 2012 SGX prospecting and trenching program.

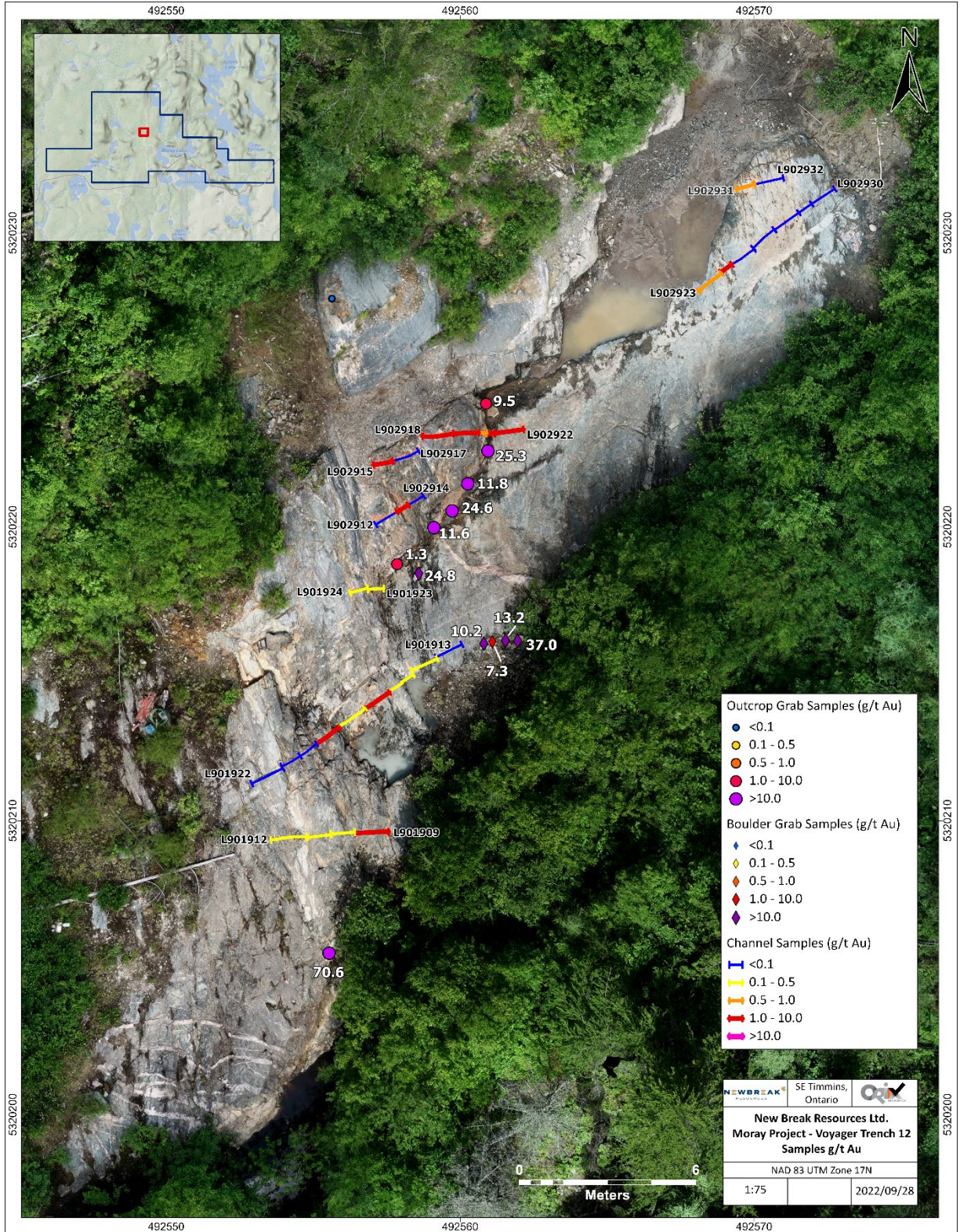
Highlights from the outcrop and boulder surface grab sampling program are presented in the following table:

**Table 1: Grab Sampling Program Assays – Trench 12, Voyager Area (July – August 2022)**

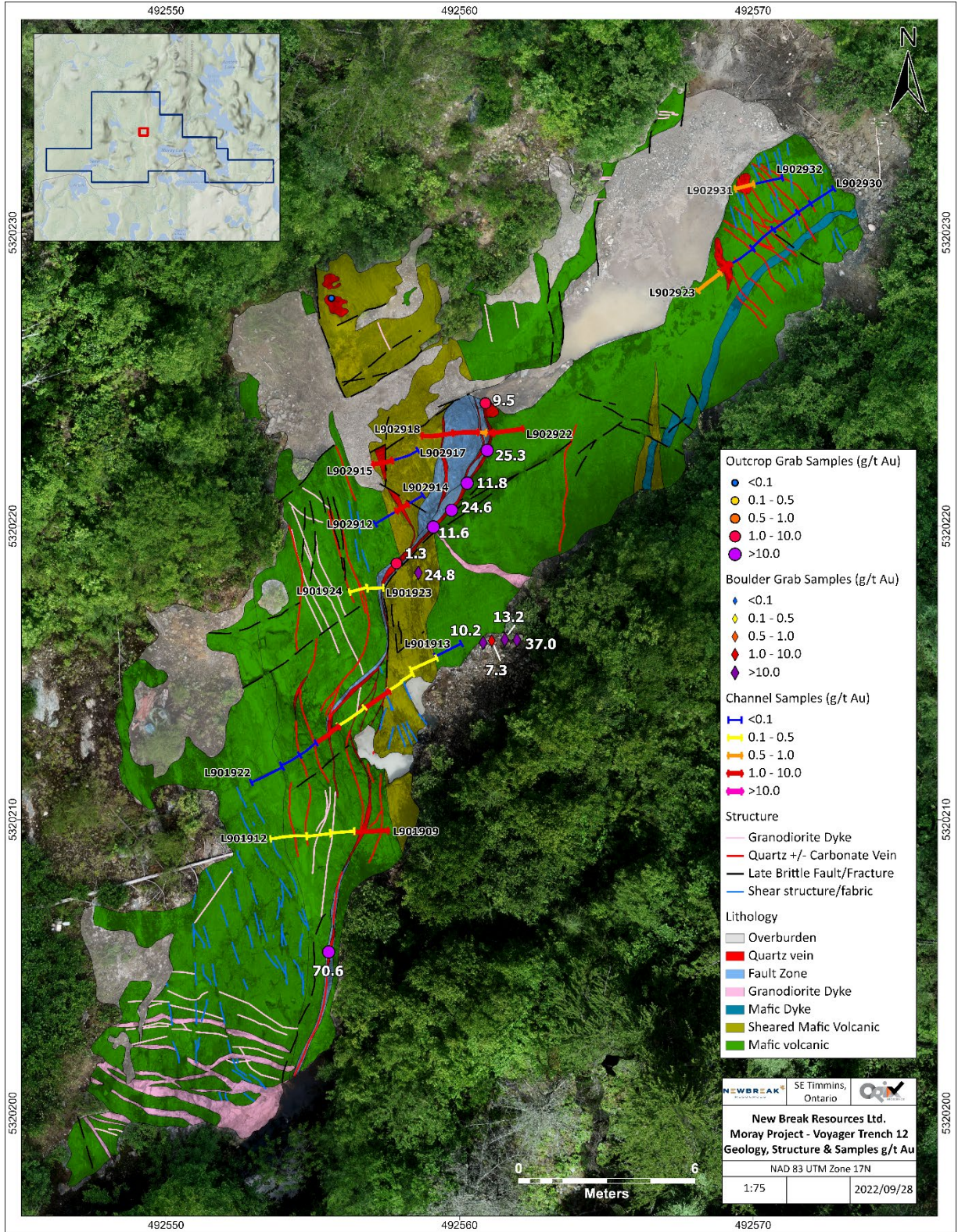
Sample Number	Description	Grade (g/t Au)
X947861	Boulder removed from shear vein	13.15
X947863	Boulder removed from shear vein	7.26
X947864	Boulder removed from shear vein	37.00
X947865	Boulder removed from shear vein	10.15
X947866	Boulder removed from shear vein	24.80
X947867	Sample east of stripped area	1.96
X947868	Shear vein	9.46
X947869	Shear vein	25.30
X947871	Shear vein	24.60
X947872	Shear vein	11.55
X947873	Shear vein	1.33
X947874	Shear vein	70.60
X947875	Shear vein	11.75

*The remaining samples ranged in gold values from 0.003 to 0.346 g/t Au.*

Outcrop and boulder grab sampling results, along with channel sampling results from the historical SGX Trench 12 Voyager showing area are presented in Figures 1 and 2. Figure 1 presents the high-resolution drone imagery from the drone survey completed by Orix, while Figure 2 layers on geology and structure as mapped by Orix.



(Figure 1 – Outcrop, boulder and channel samples at Trench 12, Voyager area – Moray Project)



**(Figure 2 – Outcrop, boulder and channel samples at Trench 12, Voyager area – Moray Project, Including structural geology)**

### Mechanical Stripping, Washing and Channel Sampling Program

In June 2022, New Break engaged CXS Canadian Exploration Services Ltd. (“**CXS**”) out of Larder Lake, Ontario, to complete an initial program of approximately 3,800 m<sup>2</sup> of mechanical stripping, principally focused on the Voyager area, including the historical SGX Trench 12 and the Fiset area, including the historical SGX Trench 1 and the NOR vein discovered by Noranda Inc. In addition, while SGX did complete 2,285 m<sup>2</sup> of mechanical stripping in a 15-trench program in 2012, SGX did not cut channel samples. As a result, CXS washed both the newly stripped areas and the historical SGX trenches 1 and 2 at Fiset and trench 12 at Voyager which was followed by a 135-sample channel sampling program. The channel sample areas were marked by New Break personnel and cut by CXS, with the program being completed on July 17, 2022.

**Table 2: Channel Sampling Program Assays – Trench 12, Voyager Area (July 2022)**

Sample Numbers	Grade <sup>(1)</sup> (g/t Au)	Length (m)	Description
L901909 – L901912	0.801	4.41	Extensional / splay veins
L901913 – L901922	0.420	9.52	Extensional / splay veins
• Including L901917 – L901919	1.070	3.32	Extensional / splay veins
L901923 – L901924	0.262	1.87	Extensional / splay veins
L902912 – L902914	2.415	2.10	Extensional / splay veins
L902915 + L902917 (no L902916)	2.788	1.75	Extensional / splay veins
L902918 – L902922	2.773	4.51	Extensional / splay veins
• Including L901921	0.800	5.74	Extensional / splay veins
L902923 – L902930	0.303	5.87	Extensional / splay veins
• Including L902924	1.165	1.41	Extensional / splay veins
L902931 – L902932	0.229	1.73	Extensional / splay veins

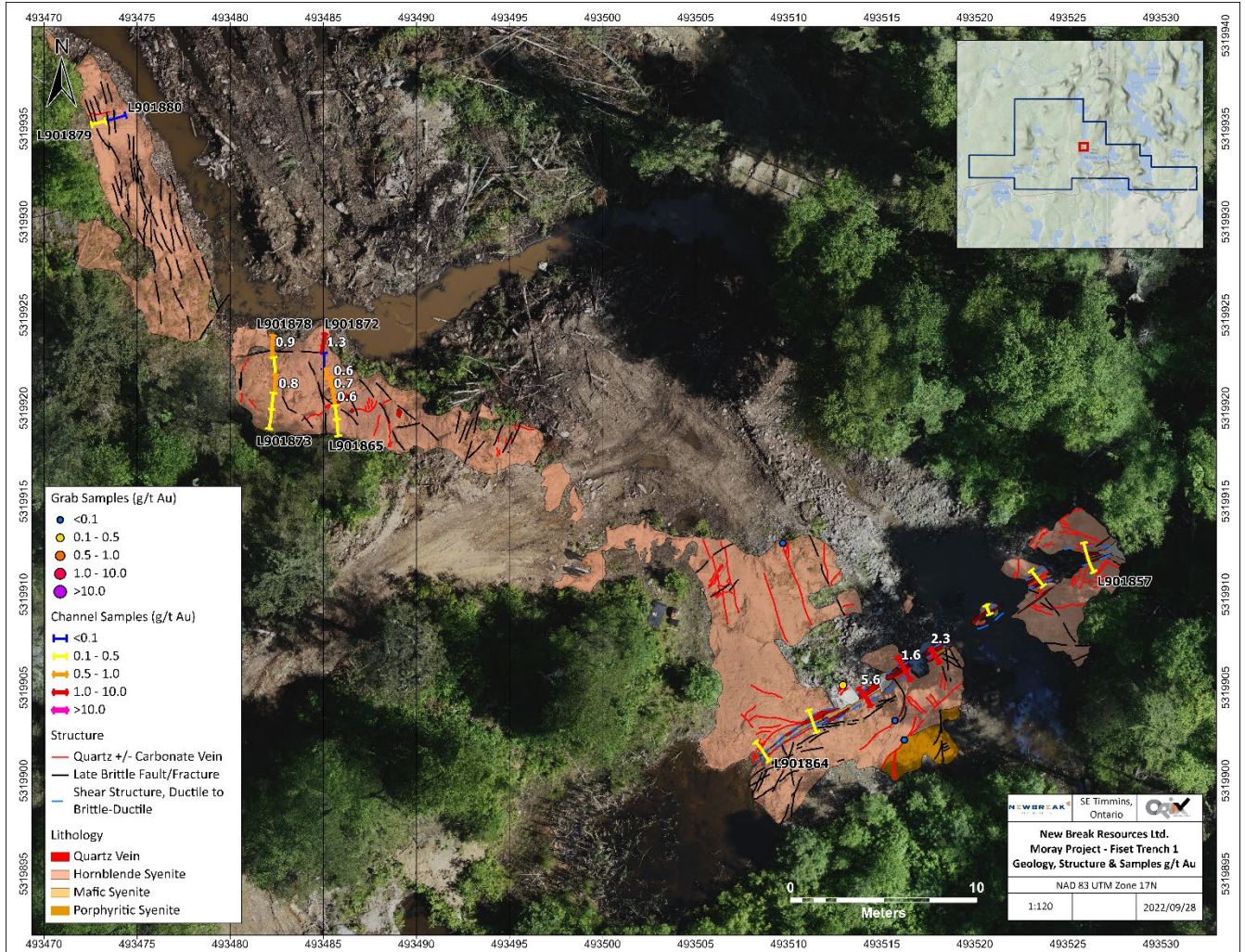
(1) Weighted average grade over entire length from individual samples.

**Table 3: Channel Sampling Program Assays – Trench 1 and NOR Vein, Fiset Area (July 2022)**

Sample Numbers	Grade (g/t Au)	Length (m)	Description
L901857	0.275	1.50	NOR vein
L901858	0.356	1.05	NOR vein
L901859	0.441	0.50	NOR vein
L901860	2.290	0.90	NOR vein
L901861	1.610	1.35	NOR vein
L901862	5.160	1.10	NOR vein
L901863	0.182	1.25	NOR vein
L901864	0.125	1.20	NOR vein
L901865 – L901872	0.570 <sup>(1)</sup>	6.20	Fiset trench 1 – new vein
L901873 – L901878	0.464 <sup>(1)</sup>	5.37	Fiset trench 1 – new vein

(1) Weighted average grade over entire length from individual samples.

Results from the Fiset showing area, including the historical SGX Trench 1 and the NOR vein, discovered by Noranda Inc., are presented in Figure 3.



(Figure 3 – Channel sample results Trench 1, Fiset area – Moray Project)

### Observations from Structural Mapping and Sampling Programs

The shear and extensional/splay veins associated with the Voyager area are hosted in mafic volcanics. The veins are strongly pyritic with local concentrations of up to 20% pyrite. Structural mapping work completed by Orix observed that the NNE-NE shear vein and the N-S extensional veins have not been traced or tested. It has been determined that drillhole ML12-01, drilled by SGX in 2012 on an azimuth of 45 degrees NE and collared 18 metres SW of the south end of trench 12, was drilled parallel to the strike of the main shear vein. New Break has examined the drill core from ML12-01 and noted that the section from 79.5 to 81.0 metres is strongly pyritic and brecciated with evidence of an earlier fabric in the brecciated fragments. This section graded 2.47 g/t Au over 1.5 metres and is proximal to the mafic volcanic – syenite contact at 83.4 metres. The mafic volcanic – syenite contact graded 0.494 g/t Au over 12.1 metres from 79.5 to 91.6 metres. New Break has concluded that drillhole ML12-01 likely “clipped” the NNE trending shear vein.

New Break believes that the gold bearing extensional/shear vein development at Trench 12 represents a strongly auriferous gold structure with the highest gold assays yet recorded on the Moray property. The vein system at Trench 12 is likely close to the mafic volcanic – syenite contact to the northeast as evidenced by SGX drillhole ML12-01. At present, it is unknown as to whether the shear vein extends into the syenite. The vein systems are noticeably rich in pyrite and quartz carbonate alteration which should yield good chargeability and resistivity results from the proposed IP survey.

The channel results from Fiset Trench 1, which include channel samples taken from the original NOR vein, are generally comparable to grab sample results produced through the SGX prospecting program in 2012. The NOR vein remains untested to the northeast and southwest.

### **Next Exploration Steps**

In order to follow up the excellent assay results at the Trench 12 Voyager area, New Break mobilized an excavator to Trench 12 on September 21, 2022, to conduct additional stripping, as the shear vein remains untested to the NNE and to SSW.

New Break also plans to conduct an additional Very Low Frequency (“VLF”) survey to trace the shear and extensional vein systems with lines spaced perpendicular to the azimuth of the shear vein. Additionally, New Break intends to conduct a 3-D Induced Polarization (“IP”) survey of both the Voyager and Fiset areas during Q4 2022. The data from the additional stripping and geophysical surveys in combination with the results expected from 46 till samples taken by IOS Services Geoscientifiques Inc. in June 2022 to analyze gold grains in bedrock, will assist in planning a drilling program, expected to be undertaken in Q1 2023.

### **Quality Assurance and Quality Control (QA/QC)**

Samples collected in the 2022 channel and grab sampling program were delivered to ALS Global (“ALS”) in Timmins, Ontario for preparation and were assayed for gold by ALS Global in Vancouver, British Columbia.

New Break implemented a strict QA/QC protocol in processing all channel and grab samples collected from the Moray property to ensure best practice in the sampling and analysis of the surface samples. Channel sample lines were located and measured perpendicular to shear vein trends and marked at 1.0 metre to 1.5 metre intervals. Blanks and certified standards were inserted into the channel sample stream at batch intervals of 10 assay tags. Final GPS control of the sample lines was determined from drone imagery. The 20<sup>th</sup> sample in the grab sample sequence was either a blank or a certified standard.

All channel rock samples were put in sturdy plastic bags, tagged, and sealed in the field by CXS personnel under the supervision of Orix professional geologists and Peter C. Hubacheck P. Geo. and QP. The channel sample bags were then put in rice pouches before being transported by CXS personnel to their secure facility in Larder Lake. The grab samples were collected by Orix professional geologists and transported in rice pouches to the ALS preparation lab in Timmins. The channel samples were transported by truck by CXS to ALS at their Timmins, Ontario facility for sample preparation where the samples were crushed to better than 70% passing 2mm, 1kg riffle split and pulverized to 85% passing 75 microns. Pulps were forwarded to ALS Global in Vancouver, British Columbia for analyses. The program collected samples for both gold and base metal multi-element analysis. Gold analyses are obtained via industry standard fire assay with ICP finish using 30 g aliquots. For samples returning greater than 10.0 g/t, gold follow-up fire assay analysis with a gravimetric finish is completed. Based on initial fire assay gold indications as well as visual indication of mineralization and alteration, intervals are selected for re-assay by the screen metallic

fire assay method. Base metal samples were analyzed for 48 trace and major elements by ICP-MS following a four-acid digestion. ALS Global are ISO/IEC 17025:2017 accredited (Lab No. 579) for the preparation and analyses performed on the New Break samples.

### **Qualified Person**

Peter C. Hubacheck, P. Geo., consulting geologist to New Break, and a Qualified Person as defined by National Instrument 43-101, has reviewed and approved the technical disclosure in this news release.

### **About New Break Resources Ltd.**

New Break is a Canadian mineral exploration company with a dual vision for value creation. In northern Ontario, New Break is focused on its Moray Project, in a well-established mining camp, within proximity to existing infrastructure, while at the same time, through our prospective land holdings in Nunavut, we provide our shareholders with significant exposure to the vast potential for exploration success in one of the most up and coming regions in Canada for gold exploration and production. New Break is supported by a highly experienced team of mining professionals committed to placing a premium on Environmental, Social and Corporate Governance. Information on New Break is available under the Company's profile on SEDAR at [www.sedar.com](http://www.sedar.com) and on the Company's website at [www.newbreakresources.ca](http://www.newbreakresources.ca). New Break began trading on the Canadian Securities Exchange ([www.thecse.com](http://www.thecse.com)) on September 7, 2022 under the symbol **CSE: NBRK**.

### **For further information on New Break, please contact:**

Michael Farrant, President and Chief Executive Officer  
Tel: 416-278-4149  
E-mail: [mfarrant@newbreakresources.ca](mailto:mfarrant@newbreakresources.ca)

And follow us on [Twitter](#) and [LinkedIn](#)

No stock exchange, regulation securities provider, securities commission or other regulatory authority has approved or disapproved the information contained in this news release.

### **CAUTIONARY NOTE REGARDING FORWARD LOOKING INFORMATION**

*Except for statements of historic fact, this news release contains certain "forward-looking information" within the meaning of applicable securities law. Forward-looking information is frequently characterized by words such as "plan", "expect", "project", "intend", "believe", "anticipate", "estimate" and other similar words, or statements that certain events or conditions "may" or "will" occur. Forward-looking statements are based on the opinions and estimates at the date the statements are made, and are subject to a variety of risks and uncertainties and other factors that could cause actual events or results to differ materially from those anticipated in the forward-looking statements including, but not limited to property agreements, timing and content of upcoming work programs, geological interpretations, receipt of property titles, an inability to predict and counteract the effects global events on the business of the Company, including but not limited to the effects on the price of commodities, capital market conditions, restriction on labour and international travel and supply chains etc. Forward-looking information addresses future events and conditions and therefore involves inherent risks and uncertainties, including factors beyond the Company's control. Accordingly, readers should not place undue reliance on forward-looking information. The Company undertakes no obligation to update publicly or otherwise any forward-looking information, except as may be required by law. Additional information identifying risks and uncertainties that could affect financial results is contained in the Company's financial statements and management's discussion and analysis (the "Filings"), such Filings available upon request.*